



# Enterprise-Class Internet Security

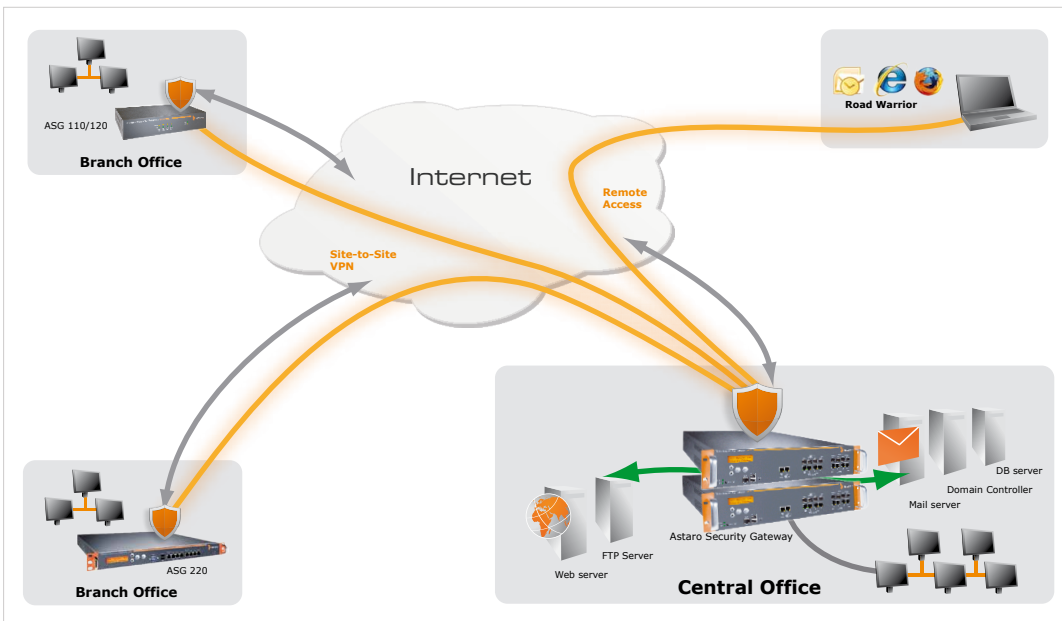
Astaro™ Security Gateway Hardware Appliances provide complete, cost-effective protection against the endless amount of viruses, spam and hackers that threaten to compromise network security today.

The Astaro Security Gateway 625 is designed to provide strong UTM security for larger enterprises. Based on high quality server systems, including Dual Intel™ Xeon Multi-Core processors and redundant highspeed hard disks, it provides optimal performance and reliability even for the most demanding environments.

## Live Demo

No download, registration or installation required - just click and test:

[www.astaro.com/en/demo](http://www.astaro.com/en/demo)



## Benefits

- › Intel® Multi-Core technology for highest performance
- › Flexible combination of gigabit copper and fiber interfaces
- › Enterprise-class feature richness and depth
- › Intuitive web-based GUI for complete system management
- › Active/Active Clustering with integrated load balancing
- › Integrated hard drive for local quarantining of spam mails and comprehensive log storage for extensive reporting

## Secure

### Clean Internet Access

Sophisticated network, mail and web filters protect users and servers and control IM/P2P and web usage.

### Protected Data

State-of-the-art encryption protects data transferred between offices and mobile workers or via E-Mail.

## Powerful

### High Performance

Dual Intel Quad-Core Xeon CPUs and 15k rpm SAS hard disks offer firewall throughput-rates of up to 10 Gbps.

### Scalable Capacity

Full gigabit UTM-throughput can be achieved by clustering up to 10 units without external load balancers.

## Reliable

### Full Redundancy

Dual Hot-swappable hard disks and power supplies offer maximum availability of critical components.

### High Availability

Active/Passive and Active/Active HA provide full unit redundancy integrated with every subscription.



Common Criteria  
Certification



ICSA Labs  
Certification

**Technical Specifications**



10 x 10/100/1000Base-TX (copper)

8 x SFP GBIC (fiber or copper)



Hot-swappable hard disks

Hot-swappable power supplies

Appliance	ASG 625
<b>Security Applications</b>	
Essential Firewall	included
Network Security	optional subscription
Mail Security	optional subscription
Web Security	optional subscription
Web Application Security	optional subscription
Wireless Security	optional subscription
<b>Capacity</b>	
Maximum licensed Users	unrestricted
Maximum recommended Users (FW/UTM)	5,000 / 2,000
Firewall Throughput	10 Gbps
IPS Throughput	1.1 Gbps
VPN Throughput	580 Mbps
UTM Throughput	350 Mbps
RED Throughput	320 Mbps
E-mail Throughput (scanned/seen)	250K / 2,200K E-mails/h
Concurrent Connections	2,500,000
Hard drive for local Quarantine & Logs	450 GB (RAID1, hot-swap)
<b>Physical Interfaces</b>	
Ethernet Interfaces	10x Gigabit Copper, 8x Gigabit SFP (SX, LX or TX)
I/O Ports	2x USB, 1x COM (RJ-45), 1x VGA
Displays	LCD: 2 lines, 16 characters per line, LED: Power, HDD, Power Fail
Power Supply	2x 460W ATX: 100-240VAC, 50~60Hz, 4~8A, redundant (hot-swap)
<b>Physical Specifications</b>	
Mounting	2U rackmount
Dimensions (W x H x D)	426 x 88 x 600 mm
Weight	16 kg/35 lbs
Power Consumption (Standby/Full)	197/280 Watts
Operating Temperature	0°C to 40°C (operating), -20°C to 80°C (storage)
Humidity	10% to 90%, non-condensing
<b>Safety Regulations</b>	
Certifications	CE, FCC, CB, VCCI, C-Tick, UL

**Contact**

Visit us at [www.astaro.com](http://www.astaro.com) or contact the Astaro partner close to you.

**Your Solution Partner**

Symtrex Inc.  
[www.symtrex.com](http://www.symtrex.com) / [www.astaro.ca](http://www.astaro.ca)  
 416-769-3000 / 866-431-8972  
[sales@symtrex.com](mailto:sales@symtrex.com) / [sales@astaro.ca](mailto:sales@astaro.ca)



[www.astaro.com](http://www.astaro.com)