



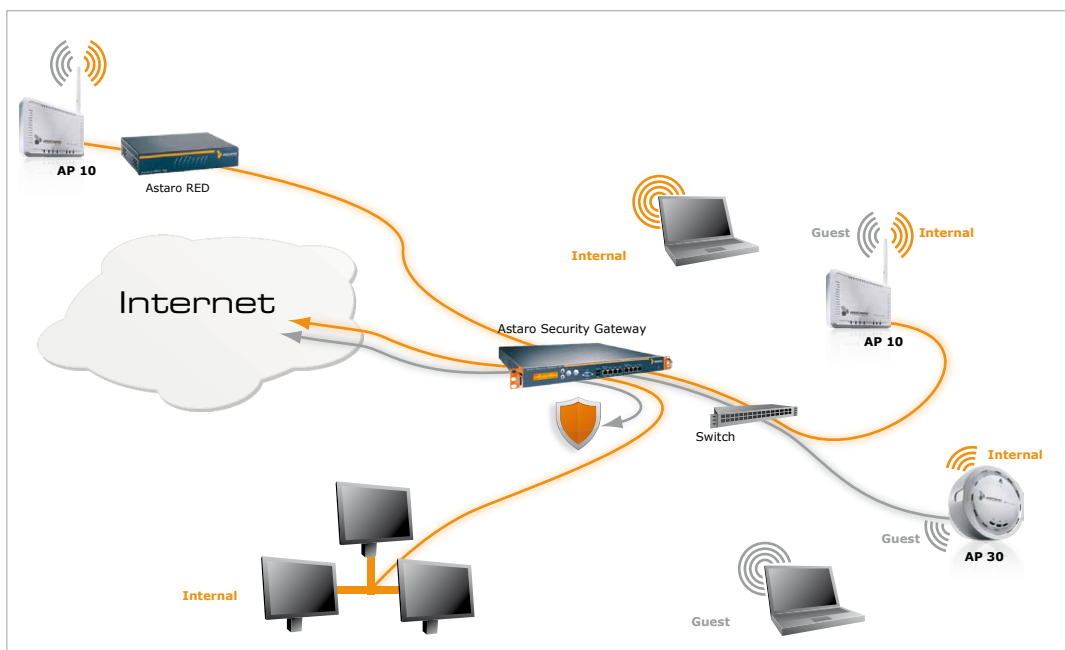
Air Traffic Control For Your Network

Every organization needs wireless networking, but existing solutions either lack important functionality or are difficult to manage. Astaro Wireless Security is a new approach that dramatically simplifies the operation of secure and reliable wireless networks. With Astaro Security Gateway's built-in wireless controller, our access points are cost-effective and require no manual configuration, redefining wireless networking.

Learn More!

Get more information on wireless security in two minutes:

www.astaro.com/wifi/2me



- Benefits**
- > Easy setup of multiple wireless access points and AP groups
 - > No local configuration of access points required
 - > Complete UTM protection for all wireless clients
 - > Maximum protection for air traffic
 - > Uninterrupted signal covering the whole office
 - > Quick setup of multiple wireless zones

Simple	Secure	Accessible
<p>Plug & Play Deployment</p> <p>Plug the access point to anywhere in your network, it will then show up in Astaro Security Gateway automatically.</p> <p>Central Management</p> <p>Monitor and manage all APs and wireless clients centrally through the built-in wireless controller of ASG.</p>	<p>Integrated Security</p> <p>Instantly protect your APs and wireless clients through complete UTM security provided by the central ASG.</p> <p>Strong Encryption</p> <p>Support of state-of-the-art wireless authentication ensures the wireless connection is as secure as it gets.</p>	<p>Placement Choice</p> <p>All access points can be placed anywhere in the organization and their wireless signal will cover the whole office.</p> <p>Guest Internet Access</p> <p>Easily set up wireless guest Internet access without the risk of compromising the integrity of your network.</p>

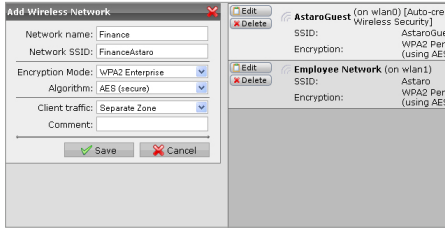
„What I really like about Astaro's integrated wireless security approach is that it frees our administrators from separately managing an expensive enterprise wireless solution.“

Jason Richards, CEO
Vineyard Networks

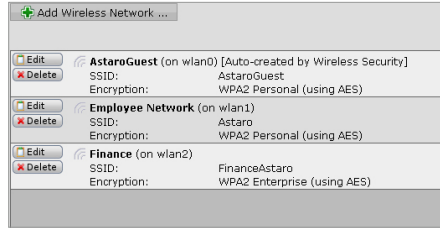


User Interface

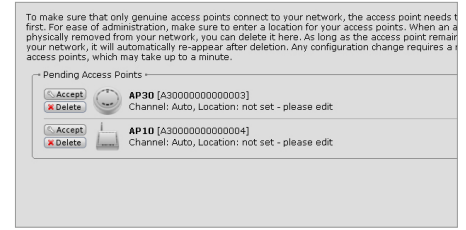
Astaro Wireless Security is a new approach that dramatically simplifies the operation of secure and reliable wireless networks through Astaro Security Gateway's WebAdmin.



Configuration of wireless networks



List of wireless networks



Access point detection and authorization

Technical Specifications

Wireless Controller	ASG 110	ASG 120	ASG 220	ASG 320	ASG 425	ASG 525	ASG 625
Recommended Sizing							
Number of Access Points	2	4	8	16	32	64	128
Number of Wireless Users	10	25	50	100	250	500	1,000
Security Features							
Wi-Fi Protected Access (WPA/WPA2)	•	•	•	•	•	•	•
Wired Equivalent Privacy (WEP)	•	•	•	•	•	•	•
802.1x Authentication (RADIUS)	•	•	•	•	•	•	•
Multiple SSIDs	8	8	8	8	8	8	8
Required Subscriptions	Wireless Security						
Access Points							
	AP 10			AP 30			
Capacity							
Maximum Users	Up to 10 users			Up to 30 users			
Maximum Throughput	150 Mbps			300 Mbps			
Physical Interfaces							
LAN Interfaces	1 x 10/100 Base TX			1 x 10/100 Base TX			
Wireless Interfaces	802.11b/g/n 2.4 GHz			802.11b/g/n 2.4 GHz			
Antenna	1 x detachable dipole antenna			3 x directional internal antennas			
Power over Ethernet (802.3af)	-			•			
LED Display	Power, LAN, WLAN			Power, LAN, WLAN			
Power Supply	90-240 V, 50/60 Hz			90-240 V, 50/60 Hz			
Physical Specifications							
Dimensions (W x H x D)	124 x 96 x 25 mm			ø 120 mm, height 50 mm			
Weight	130 g			230 g			
Mounting	Desktop/wall			Desktop/ceiling			
Safety Regulations							
Certifications	FCC, CE			FCC, CE			

Contact

Visit us at www.astaro.com or contact the Astaro partner close to you.

Your Solution Partner

Symtrex Inc.
www.symtrex.com / www.astaro.ca
 416-769-3000 / 866-431-8972
sales@symtrex.com / sales@astaro.ca

